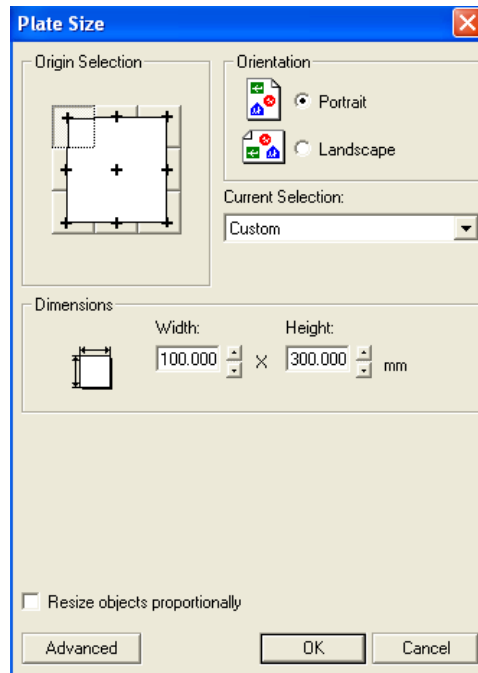




Creating Arrays

To create an Array in Engravelab follow the instructions below.

1. First create the template of the job you to do. E.g. make your plate layout that of the single job.



2. Add your text and position it where you want the text to be aligned, also add a rectangle (or the shape of the plate your doing) make it the exact size of your plate and centre it.

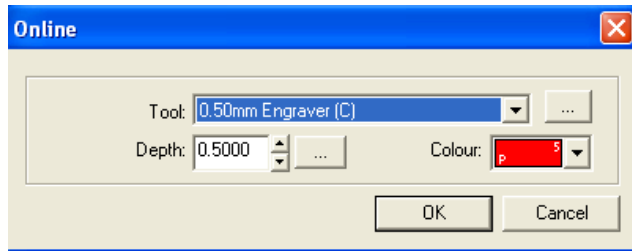
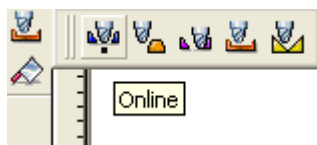


UK ENGRAVING

SERVICES LTD

PULL

3. If you want to add a tool path, highlight the text and move the cursor to online tool path, choose your depth and cutter and press ok. Your text should now be a different colour.

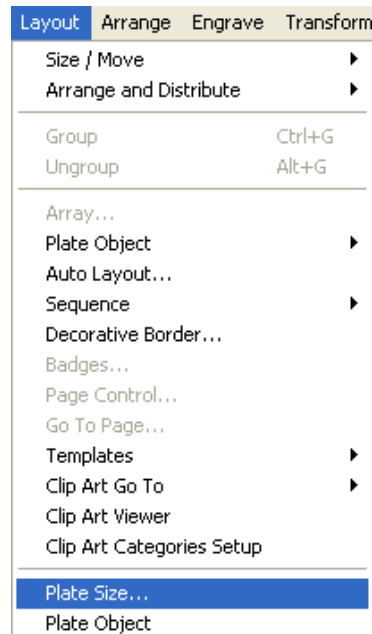


4. Press F3 and move your mouse cursor to Layout and plate size, enter the full width and height of the material available.

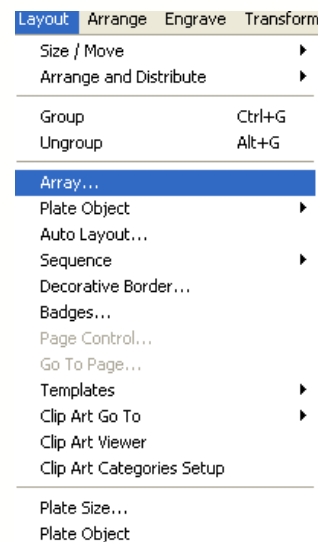


UK ENGRAVING

SERVICES LTD

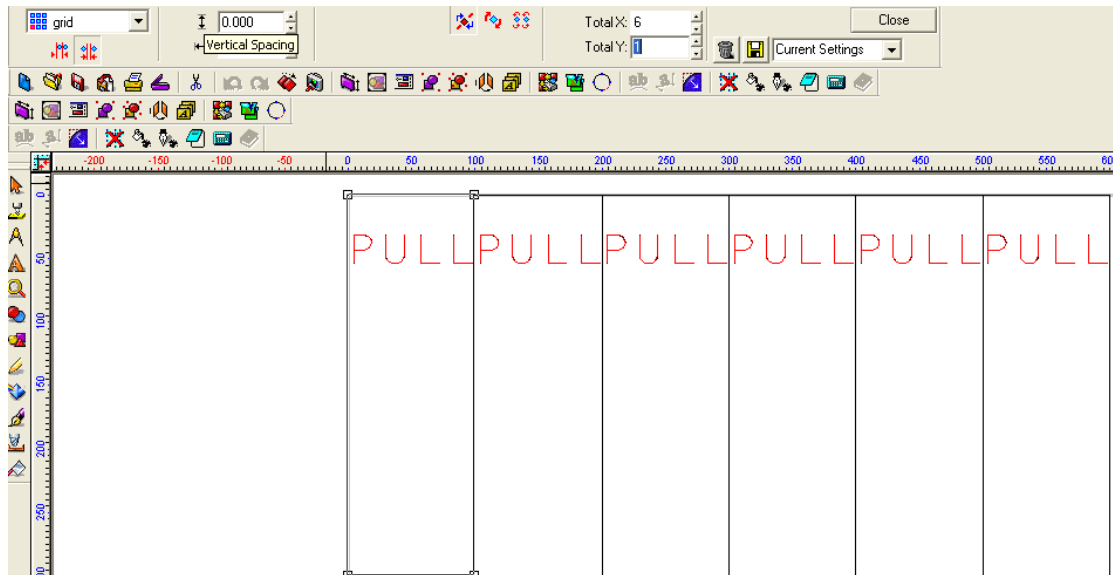


5. You now have a large space on your screen to add more than one plate. Firstly press F3 to select all and move it to the left of the screen. (If it is a small badge/plate move it to the bottom left as when we array it, it starts from the bottom left and moves outwards.)
6. Press F3 to make sure everything is highlighted and move the cursor to Layout and Array.





7. Notice the new menu bar at the top of the screen. Put in the spacing for vertical and horizontal (this is between each plate) Now use the Total X and Y up and down arrows to increase the amount of plates you want, as you can see it puts them in as you click on the arrows. Click close to confirm.



8. Highlight the part you want engraving and press the output tool, to send it through.



9. If you have cut by colour selected, choose the colour you want to send and click send, then once done choose stop cutting. Your machine has now received the job and is ready to engrave.

10. If you don't use cut by colour, click on output.