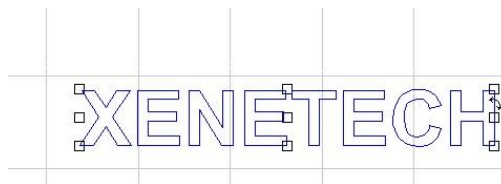


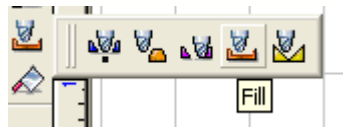


Engravelab Pro Tool Paths

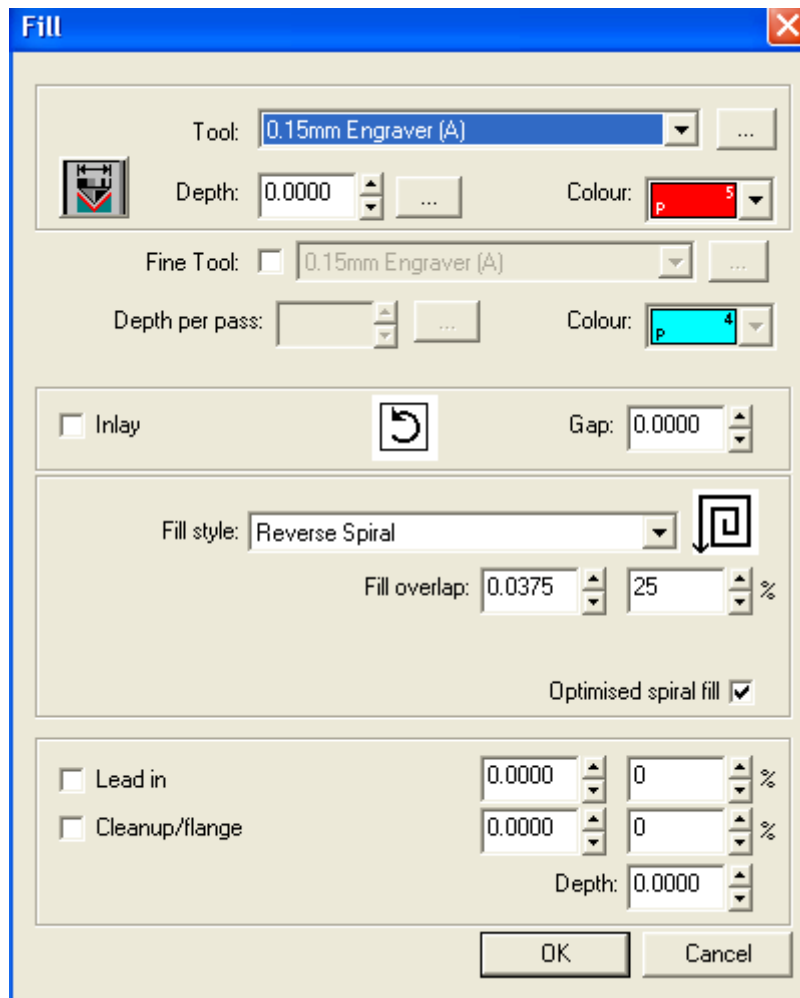
- Create a shape or some text on the screen to the size required and highlight it by pressing F3



- Whilst the item is highlighted, go to the tool path tools icon on the left of the screen and left click. This opens up a menu with 5 options of tool paths. They are MALE, FEMALE, ONLINE, DRILL and FILL. For this example we will use Fill.



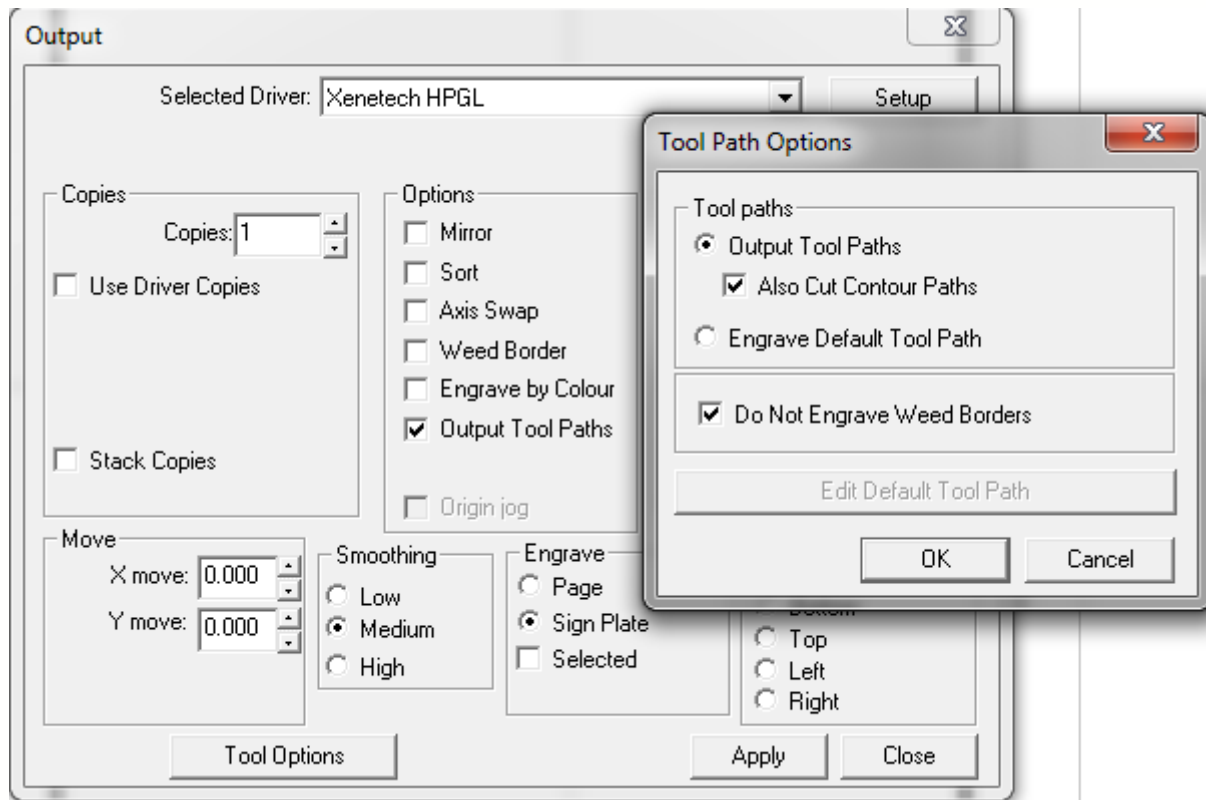
- Once fill is clicked, a new prompt box opens called FILLS
- This prompt box contains details of how to fill. Firstly choose the cutter you are going to use from the drop down menu. Now choose the depth.
- Select a colour which is different to the colour you have made the text, for this example we are using RED.
- Once these are complete, look to half way down the prompt page there is a part called Fill styles, choose the fill which most suits you, for this example we will use reverse spiral with a 25% overlap.



- Once the ok button is clicked, a fill should now appear on your text. If it does not there are 2 things to check.
 - a. Go to view and make sure Show tool paths has a tick next to it.
 - b. Re-do the toolpath with a smaller cutter as the shape or text may be too small for the cutter to fit in
- If the job is there but there are gaps missing, either make the text bigger and reapply the fill or use a smaller cutter when setting up the fill.
- When the fill is on highlight the job, go to Engrave and Engraving Defaults.



UK ENGRAVING SERVICES LTD



- Put a tick in the Output tool path, if there is one there already take it out and re apply the tick. A tool path options box comes up. Copy the figure above for the correct setting. Click ok, now select save default and click ok.
- Press F3 to select all objects and select your Output tool. This now brings up a preview of the engrave you're going to do with the fill. Before sending it to the machine, click on the eye icon twice, the first click turns your engrave all black the 2nd click opens a prompt box.



- In the prompt box take out the tick from Also cut contour paths and click ok. Now the job is ready to be sent to your machine